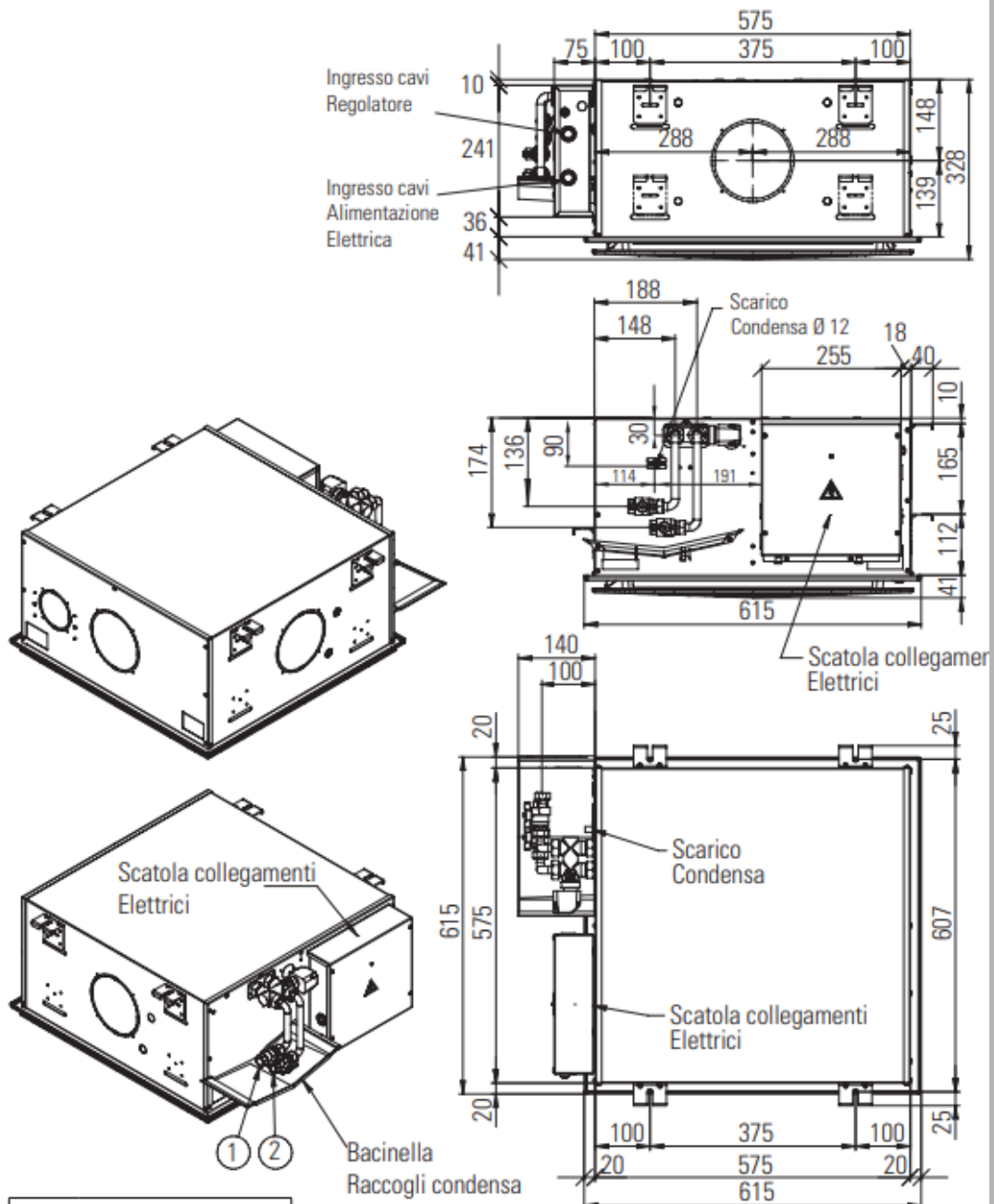


Emmeti Idrolan ECI -konvektorin asennuskuvat ja tekniset tiedot

Konvektorin mitat

Dimensioni modelli

ECI-2025 / ECI-2035 / ECI-2045 / ECI-2025 DC / ECI-2045 DC



LEGENDA

1.	Entrata acqua 1/2" F
2.	Uscita acqua 1/2" F

Konvektorin ripustus

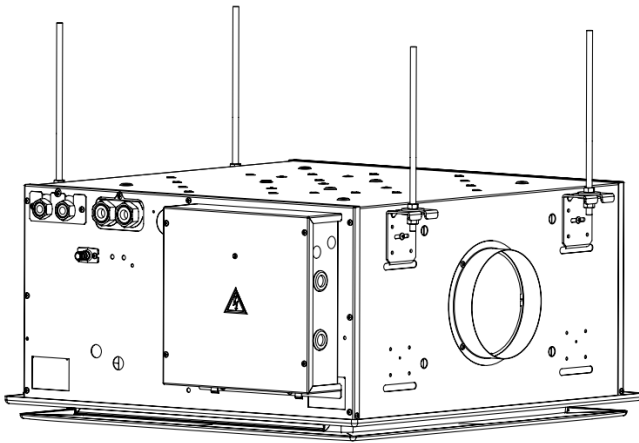


Fig. 4

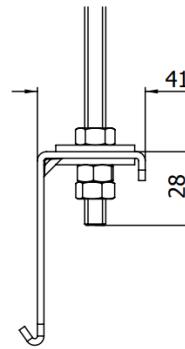
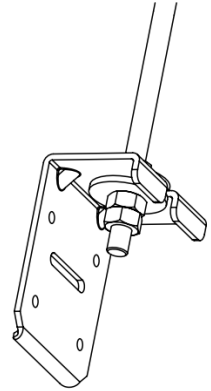
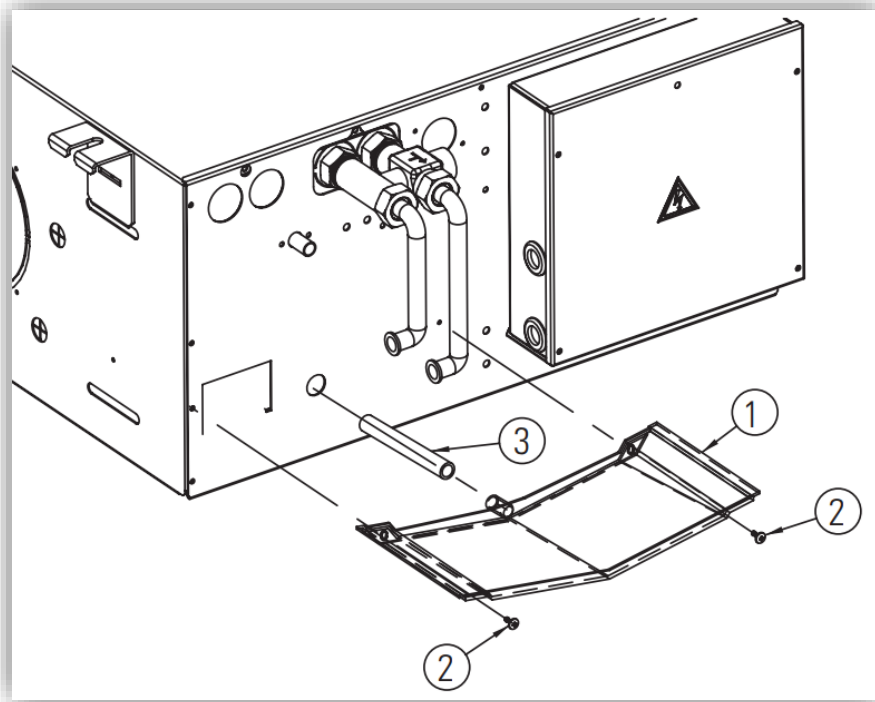


Fig. 4a



Konvektorin kondenssikaukalon asennus



Huom! Asenna myös mukana toimitettava letku (osa 3)

Kondenssiputken asennus

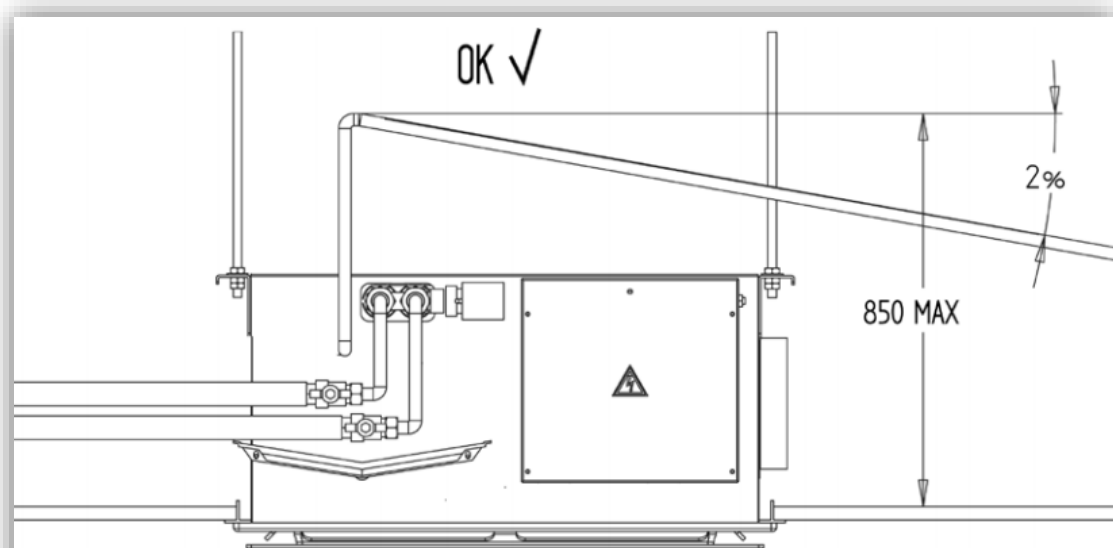


Fig.23

Konvektorin ilmaus

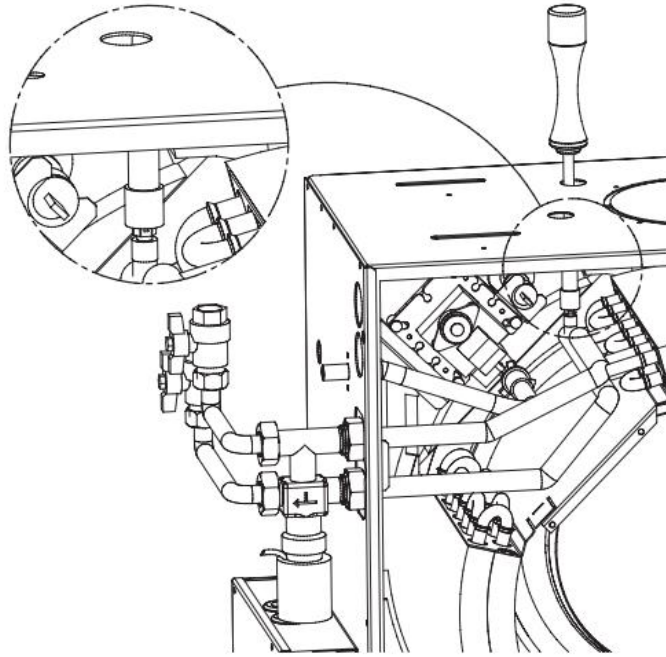


Fig.21

**ECI-2025 / ECI-2035 / ECI-2045 / ECI-2025 DC
/ ECI-2045 DC**

Kehysten ja suodattimen asennus

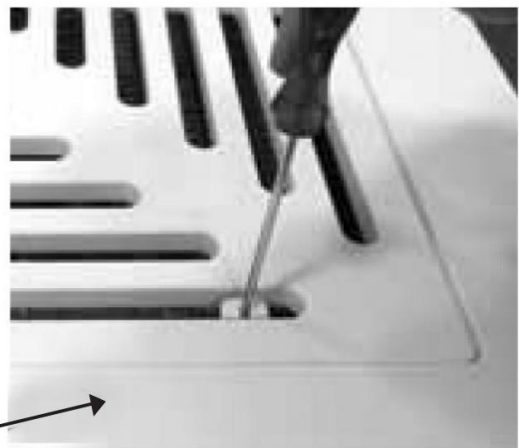
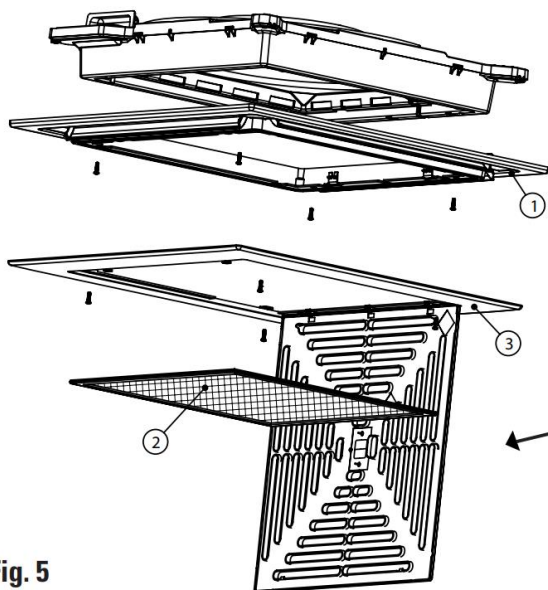
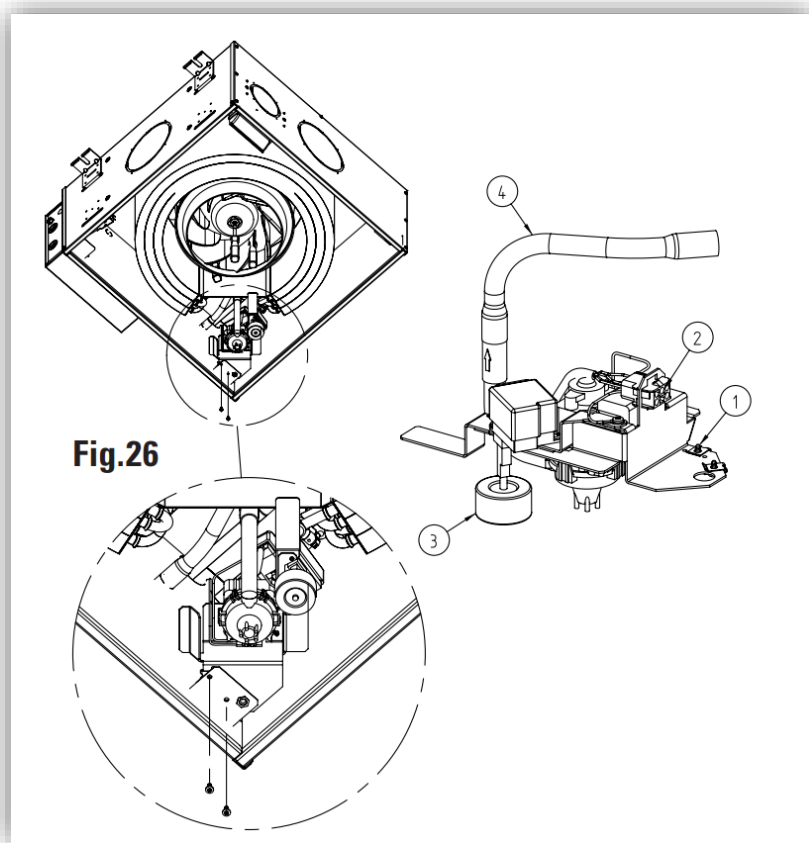


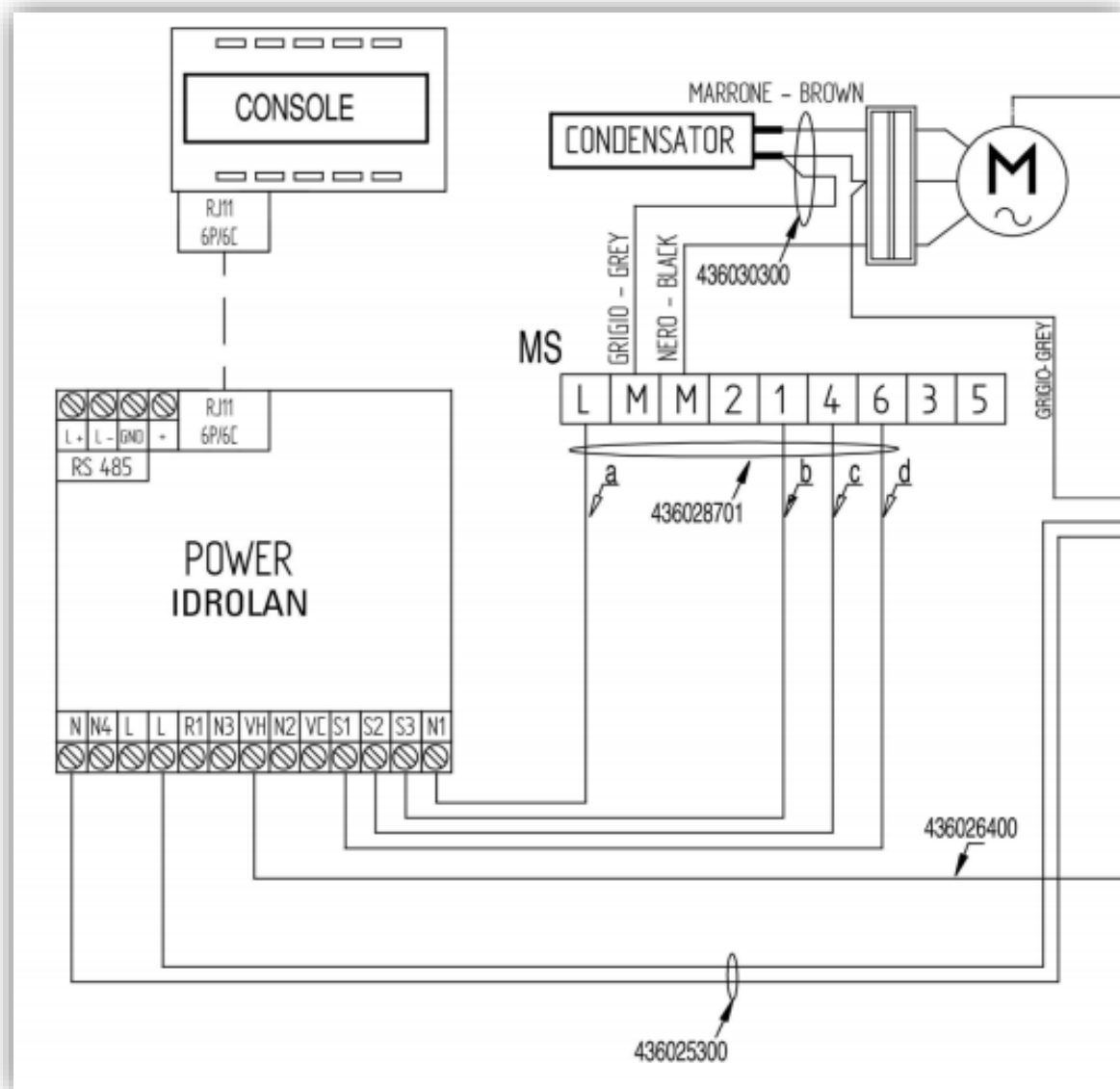
Fig. 5

Kondenssipumpun vaihto



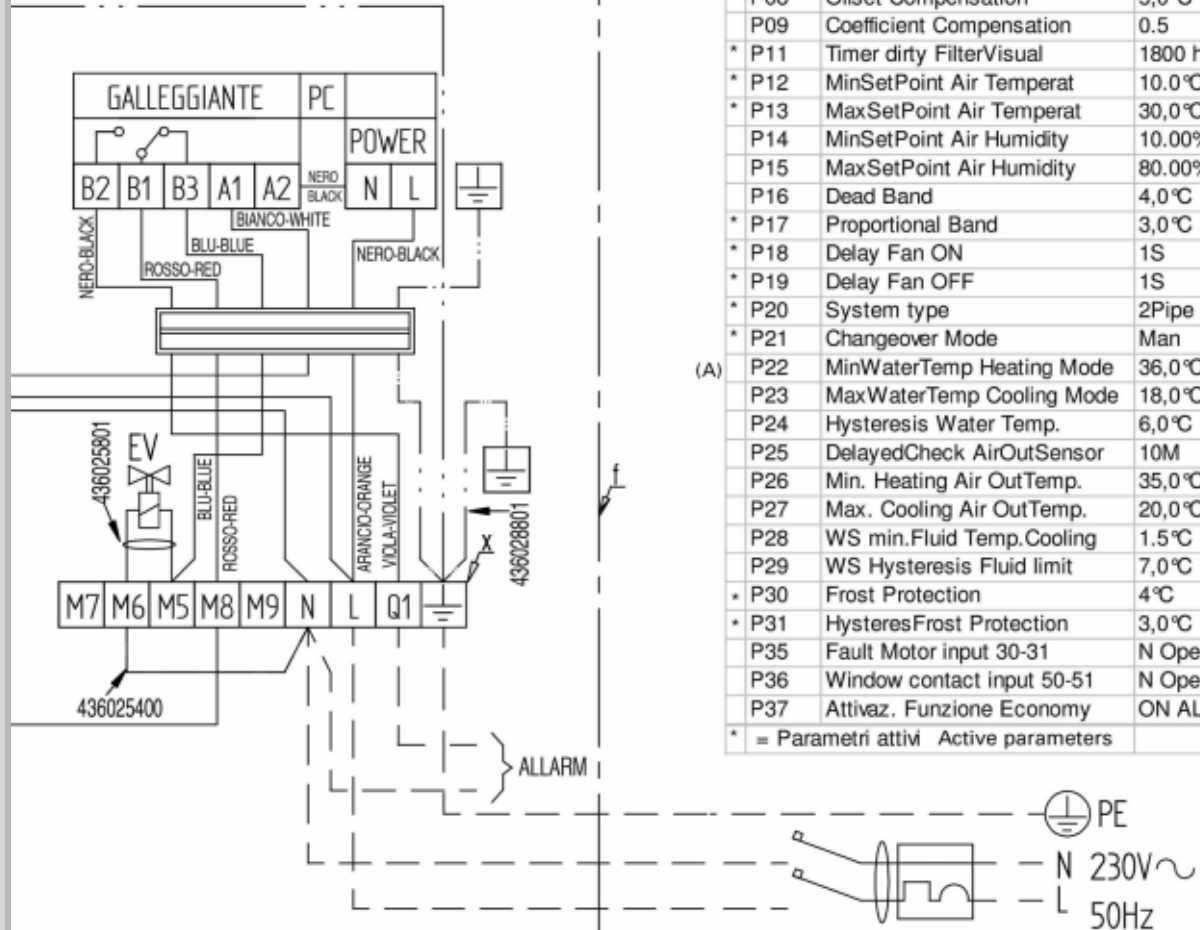
Sähkökaaviot

ECI-2045



PARAMETRI DI SETUP (001)

Par.	Descrizione	Val
* P00	Var.SetPoint EconomyValue	6.0°C
P01	RisElettrico El.Heater	No
* P02	Fan mode	Therm
P03	Fan off:destratifica	15M
P04	Destratifica Time	0M
P05	AuxFanMode	Timer
P06	Fan Aux ON min/Hours	20M
P07	EnableSummer Compensation	NTC 60
P08	Offset Compensation	5,0°C
P09	Coefficient Compensation	0.5
* P11	Timer dirty FilterVisual	1800 h
* P12	MinSetPoint Air Temperat	10.0°C
* P13	MaxSetPoint Air Temperat	30.0°C
P14	MinSetPoint Air Humidity	10.00%
P15	MaxSetPoint Air Humidity	80.00%
P16	Dead Band	4,0°C
* P17	Proportional Band	3,0°C
* P18	Delay Fan ON	1S
* P19	Delay Fan OFF	1S
* P20	System type	2Pipe
* P21	Changeover Mode	Man
(A) P22	MinWaterTemp Heating Mode	36,0°C
P23	MaxWaterTemp Cooling Mode	18,0°C
P24	Hysteresis Water Temp.	6,0°C
P25	DelayedCheck AirOutSensor	10M
P26	Min. Heating Air OutTemp.	35,0°C
P27	Max. Cooling Air OutTemp.	20,0°C
P28	WS min.Fluid Temp.Cooling	1.5°C
P29	WS Hysteresis Fluid limit	7,0°C
* P30	Frost Protection	4°C
* P31	HysteresFrost Protection	3,0°C
P35	Fault Motor input 30-31	N Open
P36	Window contact input 50-51	N Open
P37	Attivaz. Funzione Economy	ON ALL
* = Parametri attivi Active parameters		



GEND :	EV - 2/3 way ON/OFF valve 230V~/ 24V~ for heating and/or cool. (EVC summer - EVH w inter)
white wire - common	PC - condensate removal pump
black wire - high speed (a + b)	NOTE: Do not parallel connect more than one fan coil unit with the same controller
blue wire - medium speed (a + c)	
red wire - low speed (a + d)	
yellow /green wire - protection (earth con.)	
terminal board	
factoring wiring inside unit	